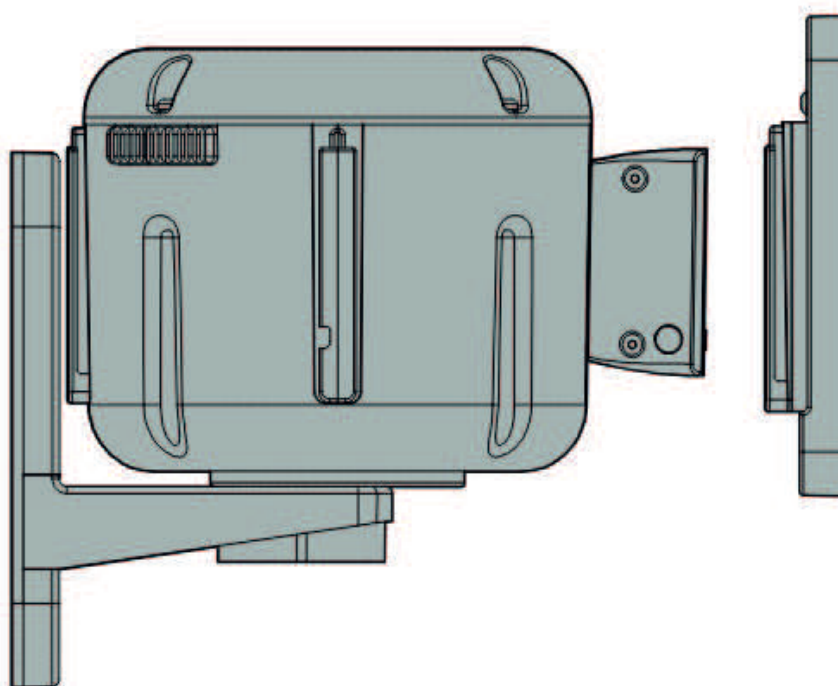


## TECHNICAL DATA



**Wall**

# CONTAINED



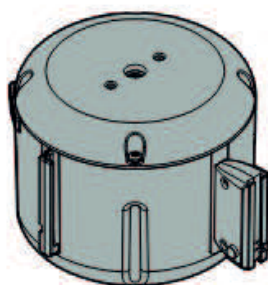
**x1**



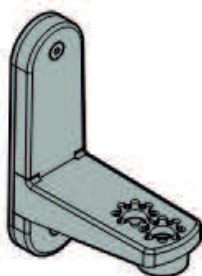
**x5**



**x5**



**x1**



**x1**



**x1**



**x1**

DIN 127 M12

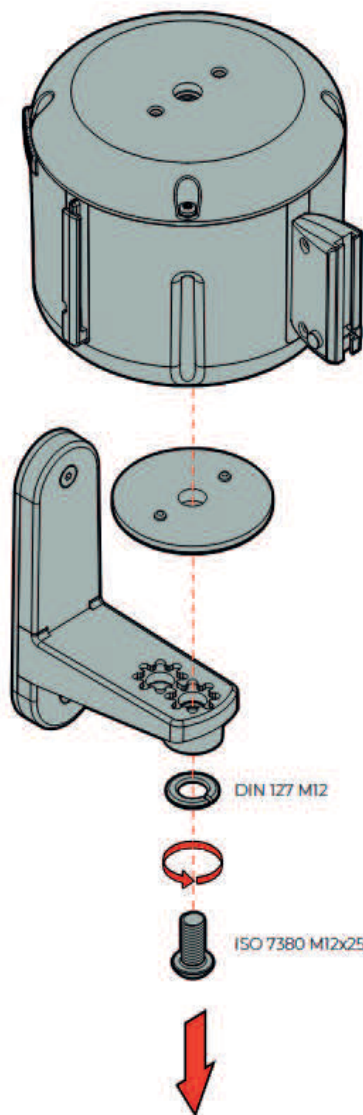


**x1**

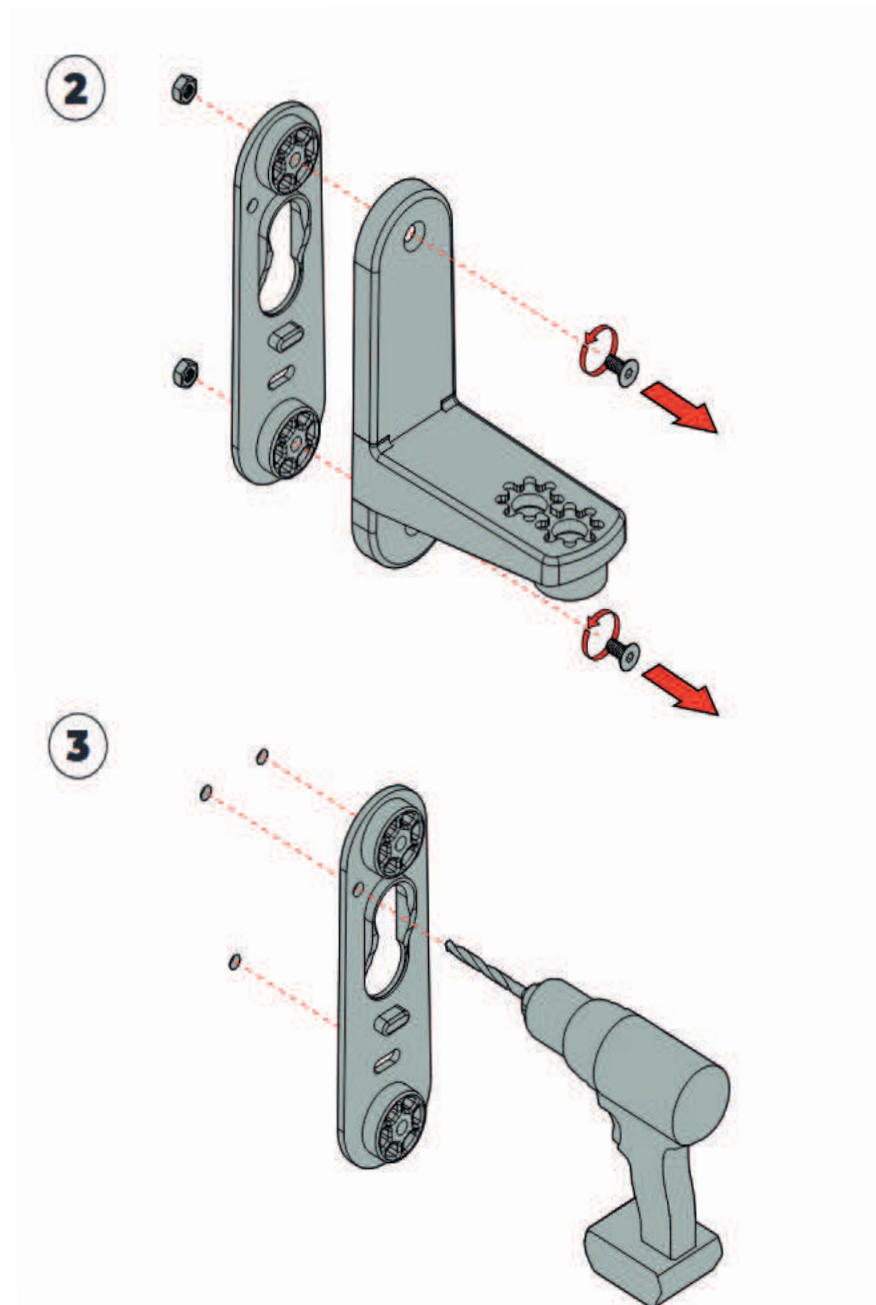
ISO 7380 M12x25

# Remove the reel from its mounting base

**1**

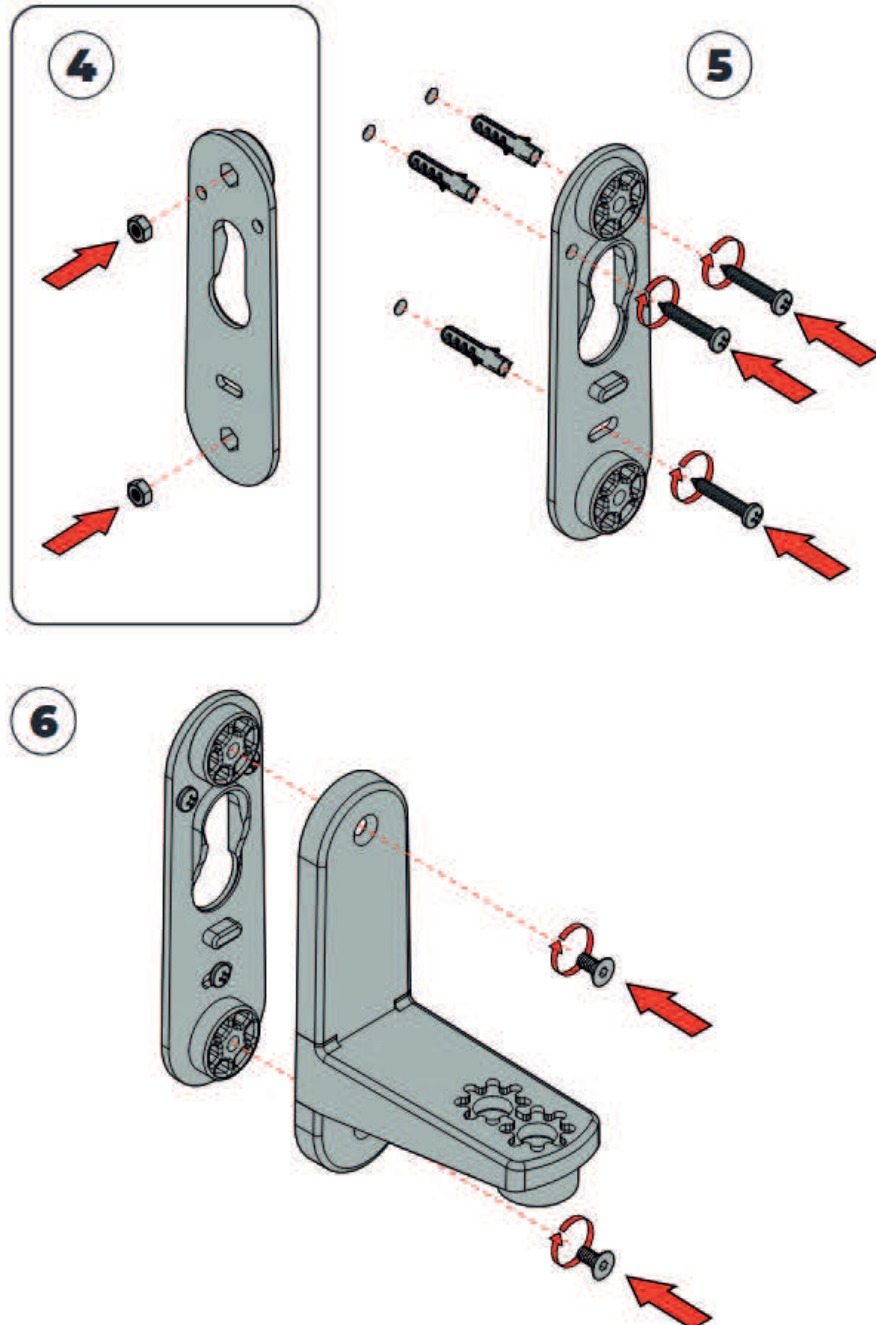


Remove the two screws to extract the structure from the mounting base



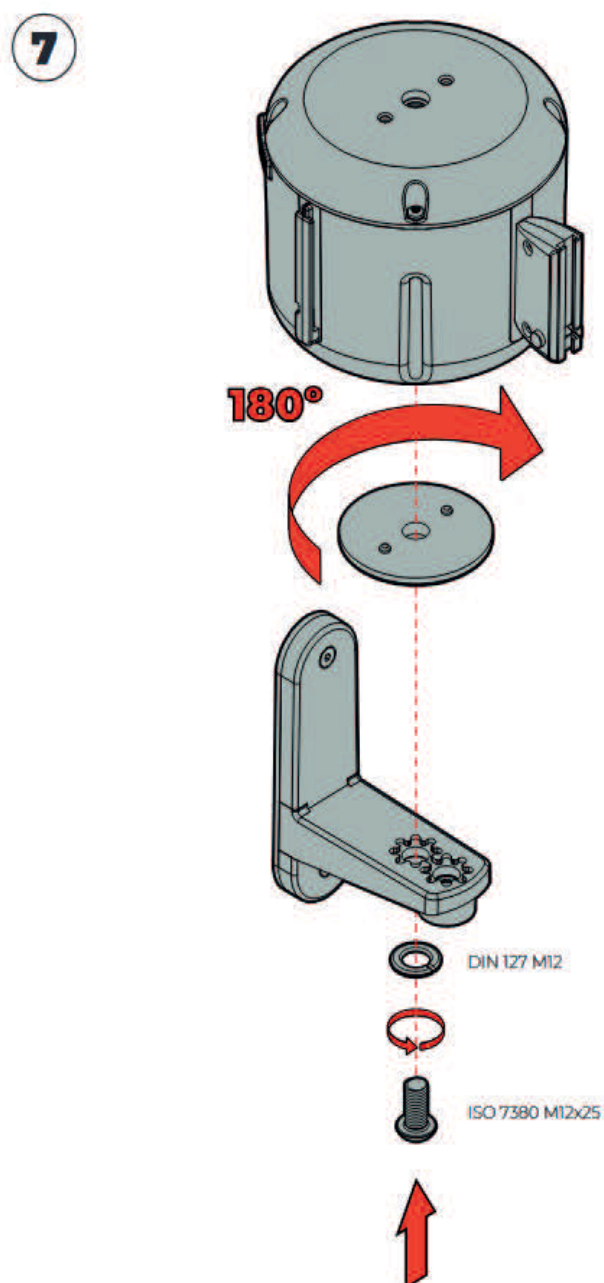
Drill the holes to fix the base to the wall

Insert the dowels and aim for the base



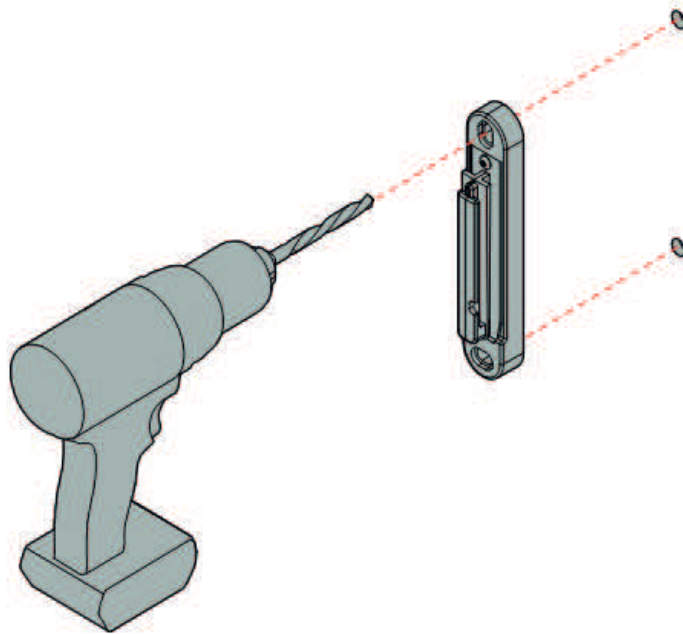
Secure the structure to its base

Position and secure the reel to its base

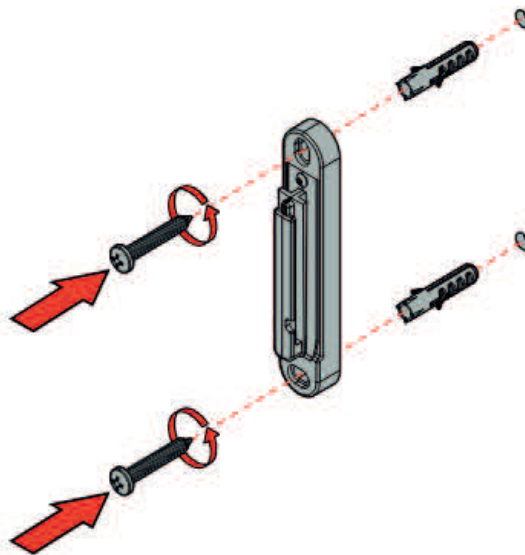


Drill the holes for the terminal

8



9



Insert the wall plugs and fix the terminal to the wall